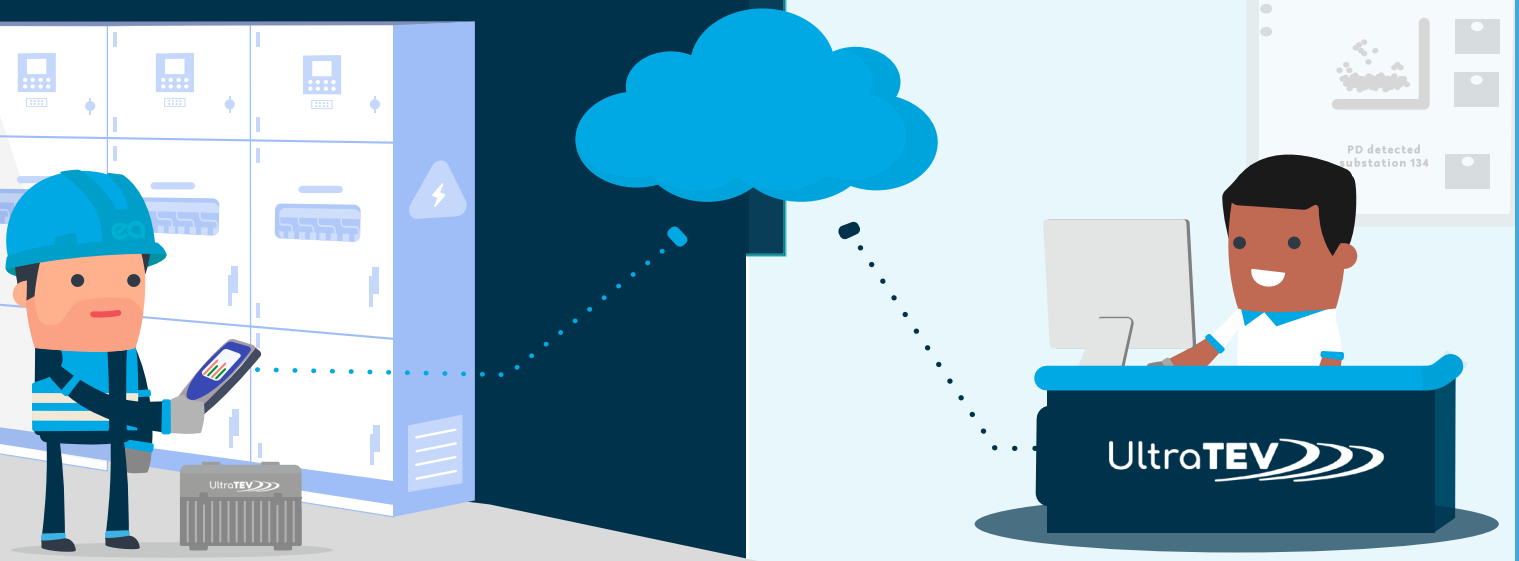


Consistently Avoiding Failures with Managed Surveys



Partial Discharge Managed Surveys



Consistently avoid failures by using Managed Surveys for the UltraTEV® Plus². A solution that delivers consistent information and actionable insights for your assets.

www.eatechnologyusa.com

The latest addition to the UltraTEV® family is Managed Surveys.

This new and innovative cloud-based platform, migrates the UltraTEV Plus² from a periodic inspection tool to a fully managed asset condition assessment solution. Having access to UltraTEV cloud repositions your standalone instrument into a fully integrated ecosystem for Partial Discharge (PD) condition assessment.

Why choose Managed Surveys?



Consistent Planning

The right survey taking the right measurements at the right time.



Consistent Trending

The right results compared to support the right intervention every time.



Consistent Measurement

The right sensor at the right location in the right order every time.



Consistent Reporting

The right information to make the right decision at the right time




Consistent Results & Analysis

The right results presented and classified in the right way every time.

On device

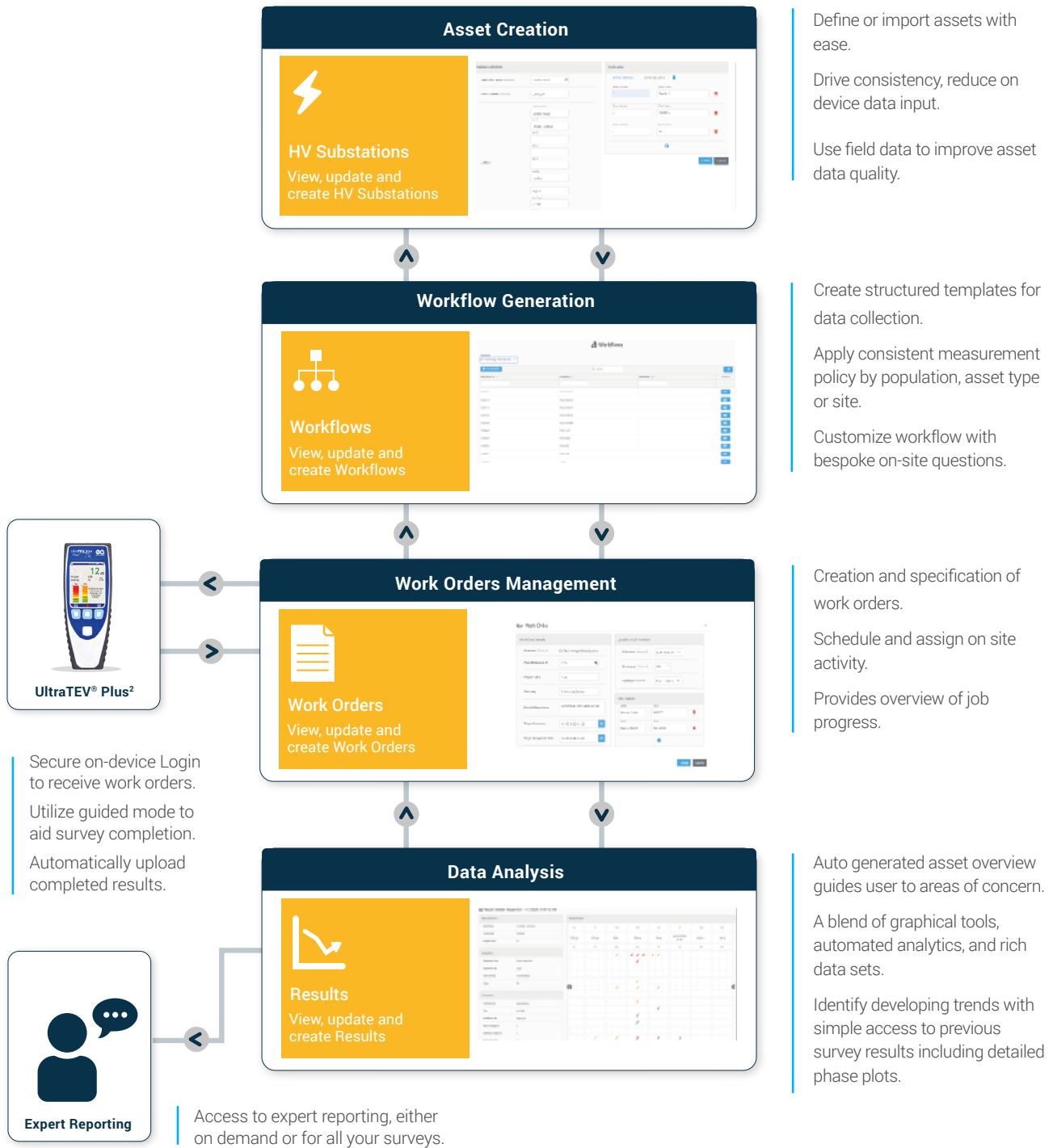
Survey jobs are sent directly to the UltraTEV Plus² and users are guided through the process, ensuring they take the right measurement at the right place each time.

| Survey Measurement 2 of 95 | |
|----------------------------|---|
| Not Completed | |
| Panel: | BUS SECTION 1 |
| Component: | Circuit Breaker |
| Measurement type: |  TEV |
| Equipment Required: | Internal TEV |

| Survey Progress | |
|-------------------------------------|------------|
| Filter - All Measurements | |
| FDR 14 Circuit Breaker | TEV 1dB |
| BUS SECTION 1 Circuit Breaker | TEV 1dB |
| AUX SUPPLY BUS A Circuit Breaker | TEV 0dB |
| FDR A Circuit Breaker | TEV |

Managed Surveys process

Managed Surveys allows you to define your assets and the data you want to collect. This enables you to allocate jobs to field staff and view the results; all from within one intuitive web based application.



Managed Survey results



Summary

Managed Surveys transforms the UltraTEV Plus² from a discrete instrument into a key component of a fully managed asset condition assessment solution.

Having access to UltraTEV cloud repositories your standalone instrument into a fully integrated ecosystem for Partial Discharge (PD) condition assessment. The Managed Surveys platform provides centralized asset details and work order management both reducing the in-field data entry time and improving the consistency of collected data.

Field engineers receive work orders directly to the UltraTEV Plus² device providing a structured approach to data collection. Users can now be fully guided through the collection process with on-screen prompts of measurement locations and accessories.

Once connected to Wi-Fi the UltraTEV Plus² automatically updates the Managed Surveys platform. From here, simple web-based access to a full analysis suite provides the ability to transform field data into actionable insights, with the optional support of EA Technology's PD experts. From the insights gained, follow-up actions can be specified and scheduled to manage the risk of any developing PD activity.

For more information or to request a Demo please call us on +1 (862) 261-2759 or email us at sales@eatechnologyusa.com



Safer, Stronger, Smarter Networks

EA Technology LLC
400 Morris Avenue, Suite 240,
Denville, NJ 07834

t +1 (862) 261-2759
e sales@eatechnologyusa.com
www.eatechnologyusa.com



Sign up here
for more
information