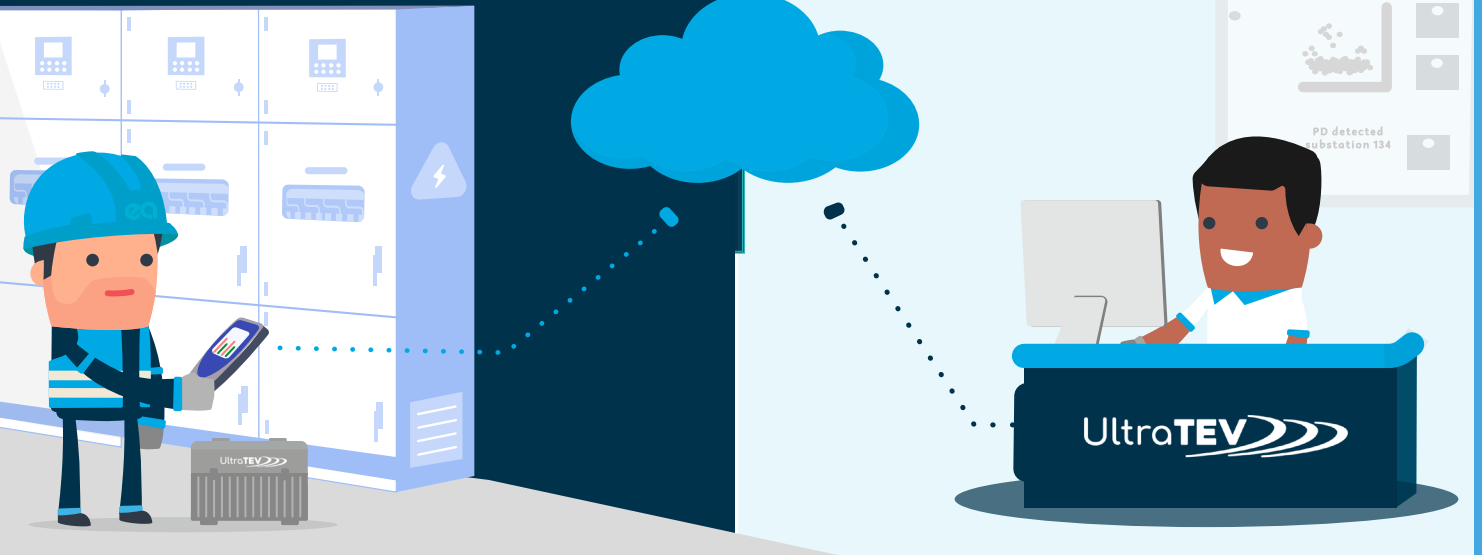


**Consistently
Avoiding Failures**

with
Managed Surveys



Partial Discharge Managed Surveys

The latest addition to the UltraTEV[®] family is Managed Surveys. This new and innovative cloud-based platform, migrates the UltraTEV[®] Plus² from a periodic inspection tool to a fully managed asset condition assessment solution. Having access to UltraTEV[®] cloud repositions your standalone instrument into a fully integrated ecosystem for Partial Discharge (PD) condition assessment.

Why choose managed surveys?

Consistent Planning: The right survey taking the right measurements at the right time.

Consistent Measurement: The right sensor at the right location in the right order every time.

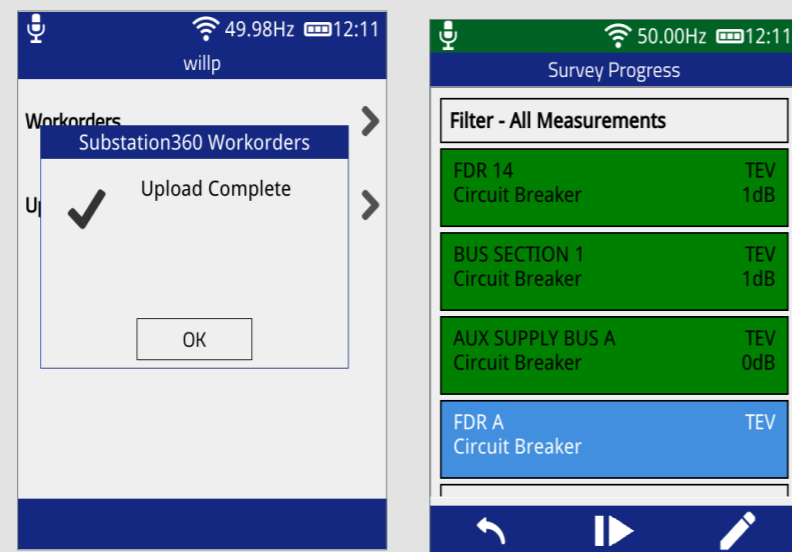
Consistent Results & Analysis: The right results presented and classified in the right way every time.

Consistent Trending: The right results compared to support the right intervention every time.

Consistent Reporting: The right information to make the right decision at the right time

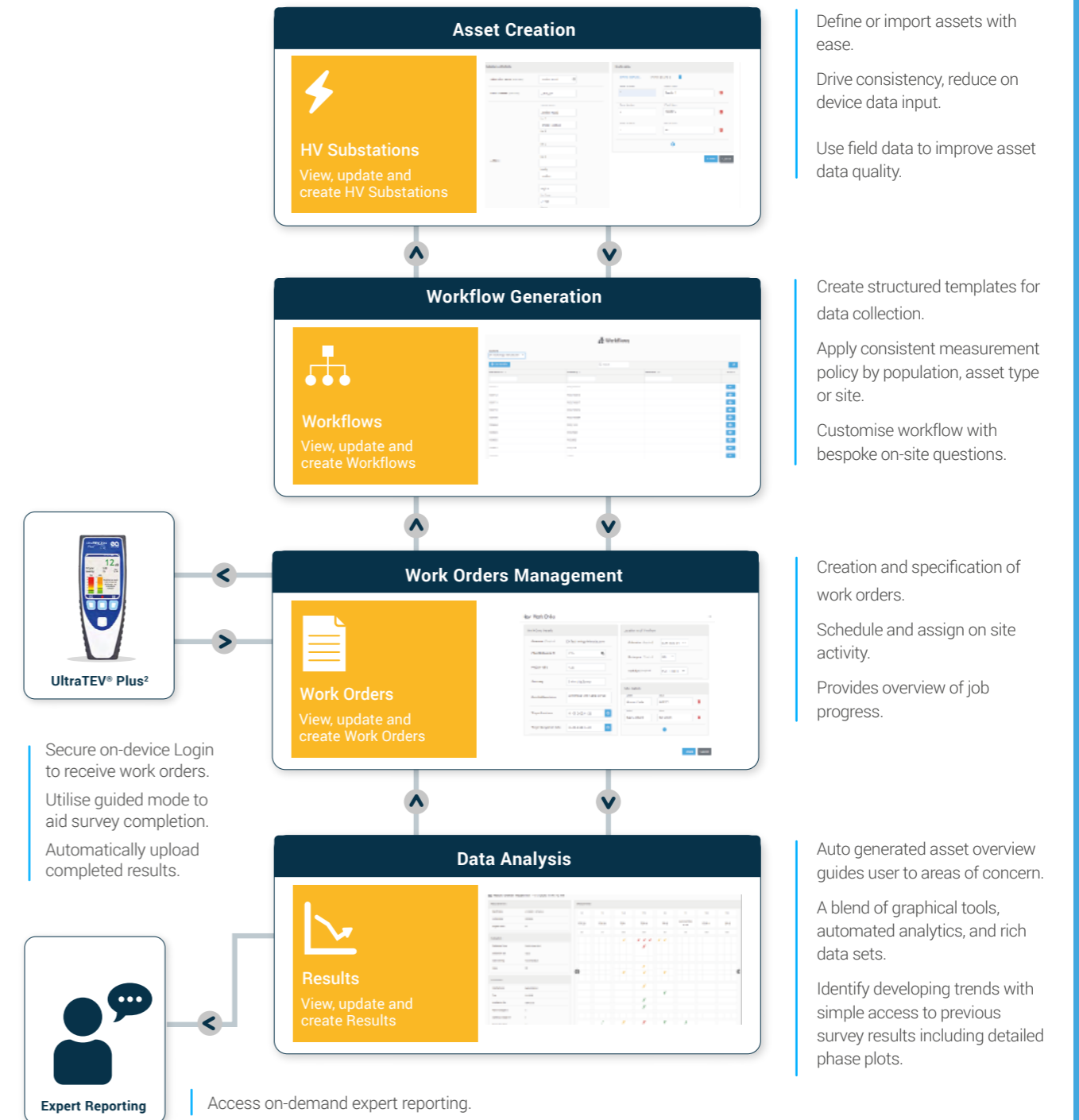
On device

We can look at your results if you want us to and that can be ad-hoc through to us managing the process and leaving you to just take the field measurements.

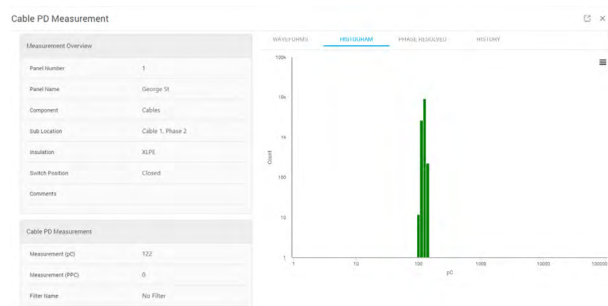
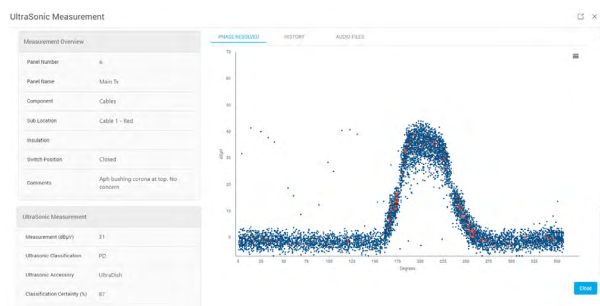
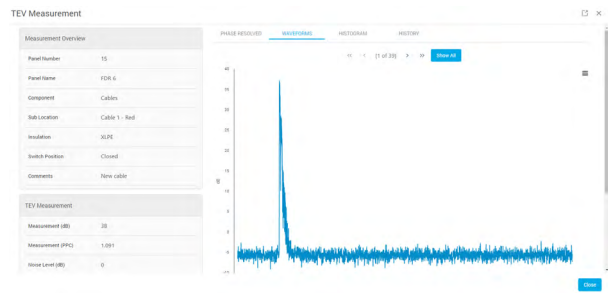


Managed Surveys process

Managed Surveys allows you to define your assets and the data you want to collect. This enables you to allocate jobs to field staff and view the results; all from within one intuitive web based application.



Managed Survey results



Summary

Managed Surveys migrates the UltraTEV® Plus² from a periodic inspection tool to a fully managed asset condition assessment.

Having access to UltraTEV® cloud repositions your standalone instrument into a fully integrated ecosystem for Partial Discharge (PD) condition assessment. The Managed Surveys platform provides centralised asset details and work order management both reducing the in-field data entry time and improving the consistency of collected data.

Field engineers receive work orders directly to the UltraTEV® Plus² device providing a structured approach to data collection. Users can now be fully guided through the collection process with on-screen prompts of measurement locations and accessories.

Once connected to Wi-Fi the UltraTEV® Plus² automatically updates the Managed Surveys platform. From here, simple web-based access to a full analysis suite provides the ability to transform field data into actionable insights, with the optional support of EA Technology's PD experts. From the insights gained, follow-up actions can be specified and scheduled to manage the risk of any developing PD activity.

For more information or to request a Demo please call us on +65 6443 3833 or email us at sales@eatechnology.sg



Safer, Stronger, Smarter Networks

EA Technology Singapore
EA Technology Asset Management Pte Ltd
4 Kaki Bukit Avenue 1 #01-02
Singapore 417939

t +65 6443 3833
e sales@eatechnology.sg
www.eatechnology.com/sea