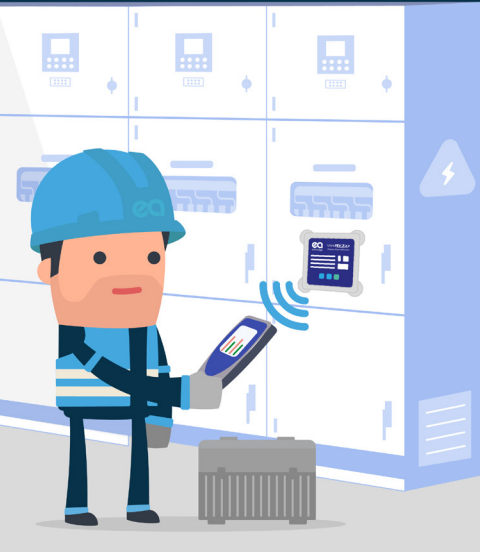


# UltraTEV<sup>®</sup> Plus<sup>2</sup> with Wireless Phase Reference

Making Partial Discharge data analysis easy and accurate



A phase lock is critical to understanding partial discharge in high voltage systems, enhancing data analysis and optimising decision making. The new wireless phase reference accessory guarantees an accurate phase lock in any environment.

## Why you need Wireless Phase Reference with UltraTEV<sup>®</sup> Plus<sup>2</sup>

Ensures the perfect phase reference every time, through multiple methods (mains power connection, e-field, Rogowski coil and photosensor).

- Wireless connection to the UltraTEV<sup>®</sup> Plus2, up to 40 metres away.
- Long life battery, up to 16 hours.



UltraTEV

Call us on +65 6443 3833  
or email [sales@eatechnology.sg](mailto:sales@eatechnology.sg)  
[www.eatechnology.com/sea](http://www.eatechnology.com/sea)



Scan here for  
more information