

## Objective: Confirming lightning as the source of an accident

Have access to information on the presence, or not, of lightning strikes at a given place and date, in order to determine whether the lightning was or wasn't responsible for an accident.

## Principle

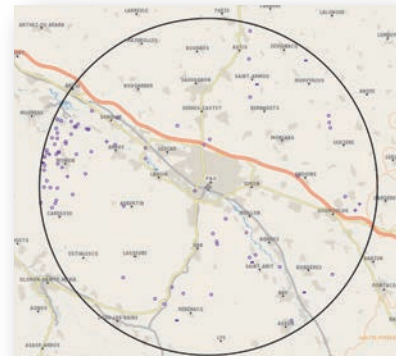
Map survey involves the reconstruction of storm activity in a circle with a configurable radius, centred on a precise point (town, address, geographic coordinates) and for a given period.

The study includes the list and characteristics of the lightning strikes, as well as a static map (PDF) and a dynamic map (KMZ to be read with Google Earth software).

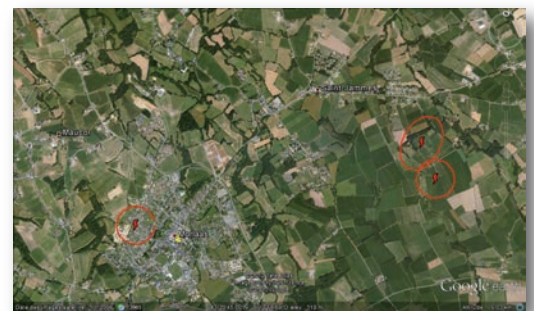
## Information provided

The detailed list of lightning strikes with their characteristics:

- > Dating up to the second
- > Location in Longitude Latitude
- > Distance in kilometres of the impact on the site and direction in degrees
- > Discharge polarity
- > Intensity in kiloamperes



PDF map



KMZ map

## General Terms and Conditions

### STARTING DATE



48 hours after receipt of order

### GENERAL CONDITIONS OF SALE



Available on demand

**EA Technology**  
Capenhurst Technology Park  
Capenhurst  
Chester, CH1 6ES  
Tel : + 44 (0) 151 339 4181  
sales@eatechnology.com  
www.eatechnology.com

SERVICE AVAILABLE WORLDWIDE WITH LIGHTNING DATA FROM THE **GLD 360** NETWORK