

## Objective : Manage the risk of lightning

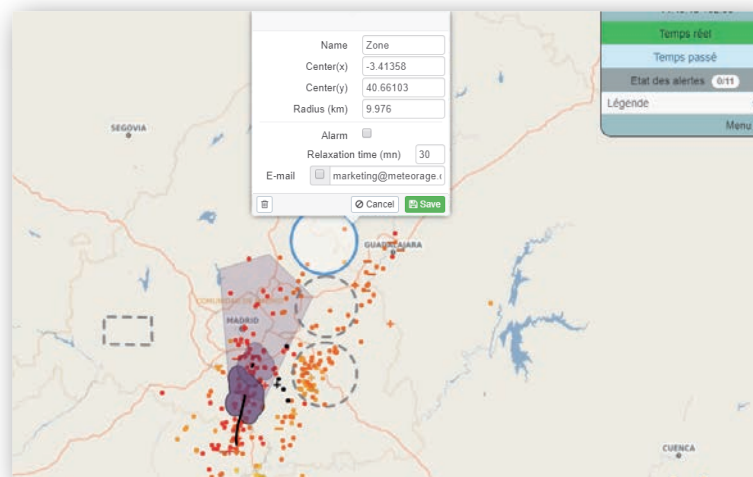
Monitor the situation in real time in a geographic area to optimise preventive measures.

## Principle

Available as an annual subscription, this service shows lightning activity in real time.

The numerous functionalities enable you to create alert areas, send out alert messages and display your business data (lines, parks, etc.)

Thanks to the **"lightning jump"** analysis, it is possible to assess a **storm's severity** (high risk of strong winds, heavy rainfall, hailstorms, etc.) and **predict its location within one hour**.



## How it works

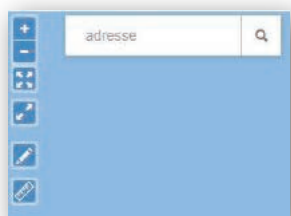
By connecting to their dedicated space, subscribers can see the lightning activity during the past two hours across a predetermined geographic window.



Strikes are continuously displayed in real time while the subscriber is logged in.

The colour of the strikes shown indicates the time period during which they were detected.


## Features

### GEOGRAPHIC



- You can zoom in or out by clicking on "+" or "-"
- One click on  button lets you display the image full screen
- The  takes you back to the boundaries of your zone
- You can now enter an address in the search area and measure the distance between two points on a map

## Create alert areas

The  button allows you to specify predefined (circle, polygon or polyline) or personalised alert areas and view the lightning activity in those zones.

## LIGHTNING ACTIVITY

The drop-down menu on the right of the screen allows you to access different functions and personalise the display of lightning activity on your map :

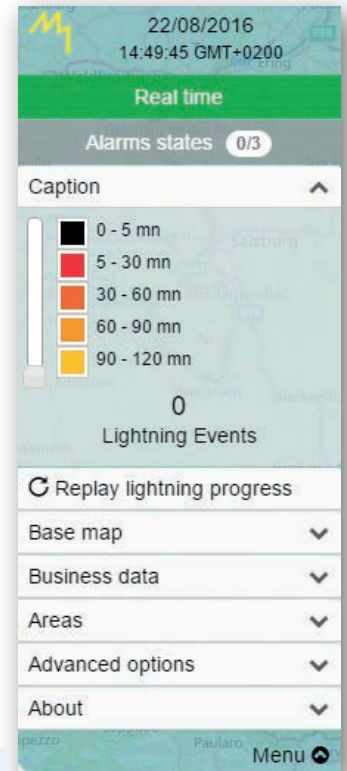
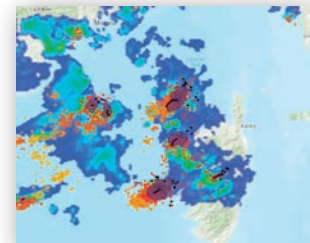
- **Alarms states** indicates the number of your zones in alert mode
- You can find the hourly range of local impacts in the **Caption** menu
- **Replay lightning progress** allows you to view lightning activity over the past 2 hours in the form of an animation
- **Base map** lets you choose the geographic map model and its opacity
- The **Business data** menu contains information associated with your activity (high-tension power lines, rail lines, etc.)
- The **Areas** menu allows you to create and manage groups of zones. You can also import zone files created under Jobs
- **Advanced options** provides additional settings

### PAST TIME (OPTIONAL)

Thanks to the 'Past time' button, you can replay a lightning event that occurred earlier (maximum duration of the query is 24 h).

### RAINFALL RADAR (OPTIONAL)

Improve the monitoring of thunderstorm events using precipitation radar images integrated into the service.



## Additional information

Clicking on an impact gives you information about it, such as the exact time and date, the type of impact, the geographic coordinates and the amplitude in kA.

## General Terms and Conditions

### STARTING DATE



1 week after receipt of order  
(excl. options)

### GENERAL CONDITIONS OF SALE



Available on demand



SERVICE AVAILABLE WORLDWIDE WITH LIGHTNING DATA FROM THE **GLD 360** NETWORK