

Objective

To provide immediate information on the presence or not of lightning strikes at a given place and date in order to determine whether the lightning was or was not responsible for damage.

Principle

The Web Survey service, available by annual subscription or by individual paid request, provides Internet access to the Météorage lightning database.

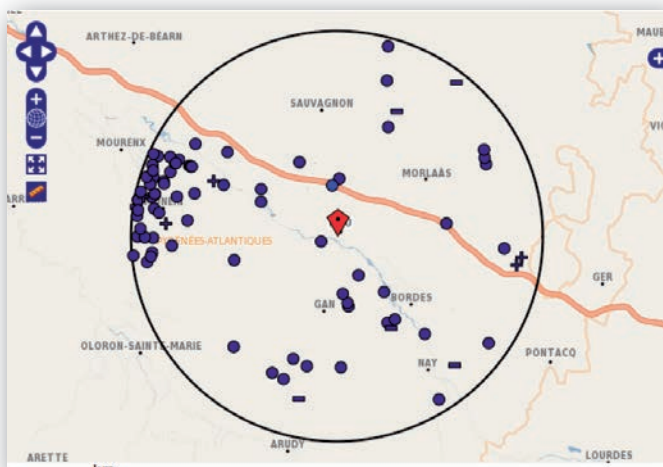
Subscribers can obtain immediate details of lightning activity recorded over a period of 24 to 72 consecutive hours at a particular location.

How it works

Users connect to our website and access their subscriber space using an ID and password provided by Météorage. After entering the data and location of the damage, the user obtains an immediate listing and dynamic map of the recorded lightning strikes (all strokes).

Request parameters :

- Address or geographic coordinates
- Date and local time or UTC
- Observation period



Interactive map :

- Map view showing lightning strikes
- Depiction of strikes with a colour code relating to a time scale
- Ability to zoom in on the map, select strikes and display the characteristics of each strike
- Different views: satellite, topographic, etc.

Detailed list of strikes :

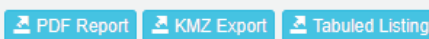
id	date	lat.	long.	amp.	dist.	type
1	22/07/2015 00:06:04	43.1685	-0.4510	-2.7	15.5	cloud
2	22/07/2015 00:06:04	43.1749	-0.4498	-6.2	14.8	cloud
3	22/07/2015 00:06:04	43.1830	-0.2406	+2.0	16.3	cloud
4	22/07/2015 00:06:04	43.3910	-0.3100	-1.8	11.7	cloud
5	22/07/2015 00:06:04	43.1301	-0.2820	-3.7	19.7	cloud
6	22/07/2015 00:06:04	43.2066	-0.2665	-6.0	12.8	cloud
7	22/07/2015 00:06:04	43.2188	-0.3037	-3.9	10.1	cloud
8	22/07/2015 00:06:04	43.1933	-0.2424	+2.3	15.4	cloud
9	22/07/2015 00:06:04	43.2406	-0.3047	-4.8	8.1	cloud
10	22/07/2015 00:06:04	43.2188	-0.3069	-4.5	9.9	ground
11	22/07/2015 00:06:04	43.1959	-0.2490	-2.8	18.8	cloud
12	22/07/2015 00:06:04	43.1845	-0.3370	-2.7	12.6	cloud

Ability to choose the fields to display as :

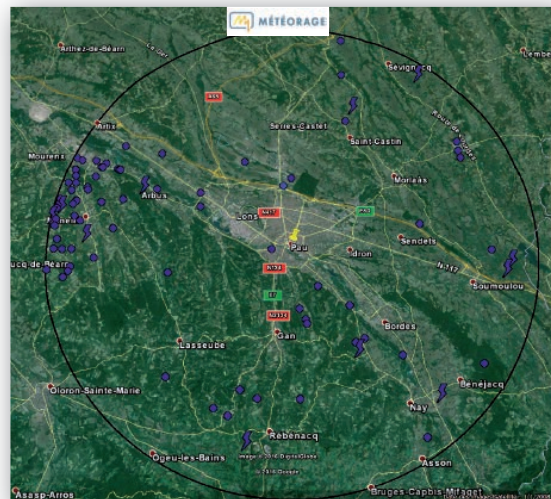
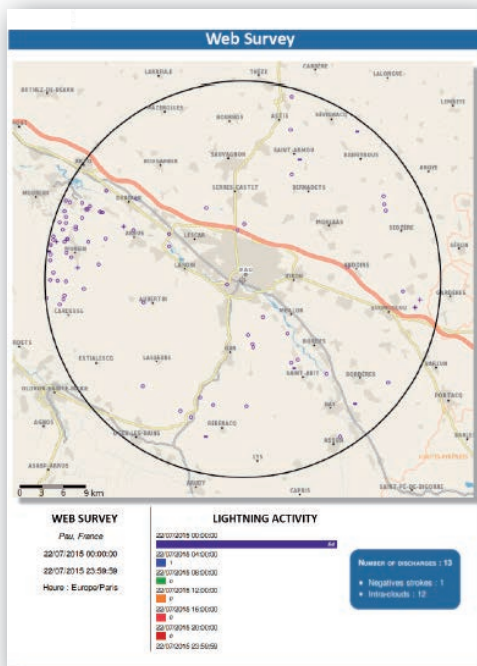
- Strike number
- Date and time
- Longitude
- Latitude
- Intensity and polarity
- Distance from the centre of the observation area

Ability to filter fields

Archive and export data :



- The map and list can be archived and exported in PDF format ("PDF Report")
- Data can also be exported in KMZ format (Google Earth - "KMZ Export") and XLS (Excel - "Tabuled Listing")



General Terms and Conditions

PRE-REQUISITES



Internet access

STARTING DATE



1 week after receipt of order

GENERAL CONDITIONS OF SALE



Available on demand

EA Technology

Capenhurst Technology Park
Capenhurst
Chester, CH1 6ES

Tel : + 44 (0) 151 339 4181

sales@eatechnology.com
www.eatechnology.com